

# Storm THP

Workstation with AMD RYZEN™ THREADRIPPER™ PRO Processor

**Storm THP** is perfect for compute-intensive multithreaded applications used by architects, engineers, scientists, geophysicists, etc.

## DESIGN PRINCIPLES

- Perfected cooling for unleashed performance
- Optimized for immersive computing applications
- Supports AMD Ryzen™ Threadripper™ PRO series processors
- Tasks like 3D modelling, editing, or video rendering work in perfect harmony at amazing speeds.
- While the PC compiles and renders, amazing gaming capabilities are available



## TOP APPLICATIONS



Rendering



Artificial Intelligence



CAO / DAO

## KEY BENEFITS

- High power efficiency
- Extreme multitasks capabilities
- Liquid cooling efficiency

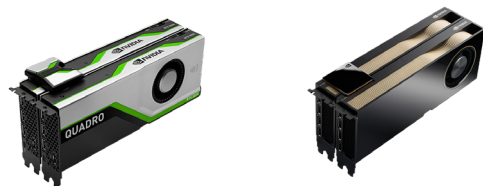
## KEY FEATURES

Unique solution which supports :

- 1x AMD Ryzen™ Threadripper™ PRO 3995WX
- Up to 8x DDR4-3200 DIMM slots
- Up to 2x M.2 NVMe storage
- Dual 10Gb Ethernet Ports
- From 1000W to 2100W PSU (depends on configuration)



**CPU:**  
AMD Ryzen™ Threadripper™  
PRO 3995WX



**GPU linked via SLI Bridge or NVLink®**

## SPECIFICATIONS

### System

<b>Model</b>	Storm THP
<b>Dimension</b>	232 x 559 x 560 mm 9.13" x 22.0" x 22.04" (W x H x D)
<b>Weight</b>	16,4kg 35.3lbs

### Storage

<b>Internal type</b>	Up to 3x M.2 slots
<b>Front type</b>	Up to 8x SATA 3.5" slots

### Motherboard

<b>Chipset</b>	AMD WRX80
<b>Expansions slots</b>	Up to 7x PCIe 4.0 x16 slots
<b>M.2 connector</b>	Up to 3 connectors
<b>Network</b>	1x Intel® X550-AT2 dual 10Gb Ethernet

### Processor

<b>Socket type</b>	AMD Socket sWRX8
<b>Supported CPU</b>	AMD Ryzen™ Threadripper™ PRO Series Processors
<b>TDP</b>	Supports all Threadripper™ PRO Series (280W)

### Memory

<b>Quantity</b>	8x DDR4 slots
<b>Speed</b>	3200/3000/2933/2800/2666/2400/2133 MHz, ECC/NON-ECC, UDIMM/RDIMM/3DS RDIMM
<b>Channels</b>	8 Channel Memory Architecture

### Graphic Cards

<b>Max length</b>	Storage layout: 359 mm Open layout: 549 mm (524 with front fan)
<b>TDP</b>	Up to 400W per card
<b>Technology</b>	Optional NVIDIA® NVLink® (for 2x or 4x cards)
<b>Cooling</b>	Only available for QUADRO

### Front I/O

<b>Button</b>	1x Reset 1x Fan controller (behind door)
<b>LED</b>	1x Power button
<b>Port</b>	2x USB Gen 2.0 2x USB Gen 3.0 2x Audio ports (In/Out)

### Back I/O

<b>Button</b>	1x BIOS FlashBack™ 1x Clear CMOS
<b>LED</b>	2x System status LAN 2x Speed system LAN
<b>Port</b>	1x USB 3.2 Gen 2x2 ports (1x USB Type-C) 9x USB 3.2 Gen 2 ports (8x Type-A + 1x Type-C) 1x ASUS Wi-Fi Module (2x ports for antenna) 2x dual 10Gb Ethernet ports 5x Audio jacks 1x Optical S/PDIF out port 16x Display ports (via GPUs)

### Management

<b>BMC</b>	Aspeed® 2500
------------	--------------

### System Cooling

<b>Type</b>	Available in Air and Hybrid Liquid cooling
-------------	--

### Power Input

<b>Type</b>	1000 W PSU for 2x GPUs 1600 W PSU for 4x GPUs 2100 W PSU for 6x GPUs
<b>Input Range</b>	100-240Vac, 50-60Hz, 100A max

### Warranty

<b>Length</b>	3 years standard warranty (return to warehouse)
---------------	---

### Operating Environment

<b>RoHS</b>	Compliant
<b>Temperature</b>	Up to 45°C
<b>Humidity</b>	Up to 80% (non-condensing)